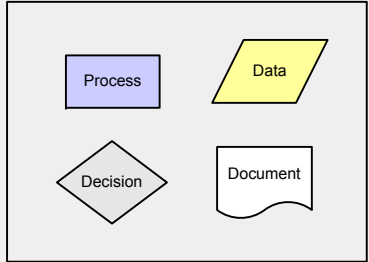
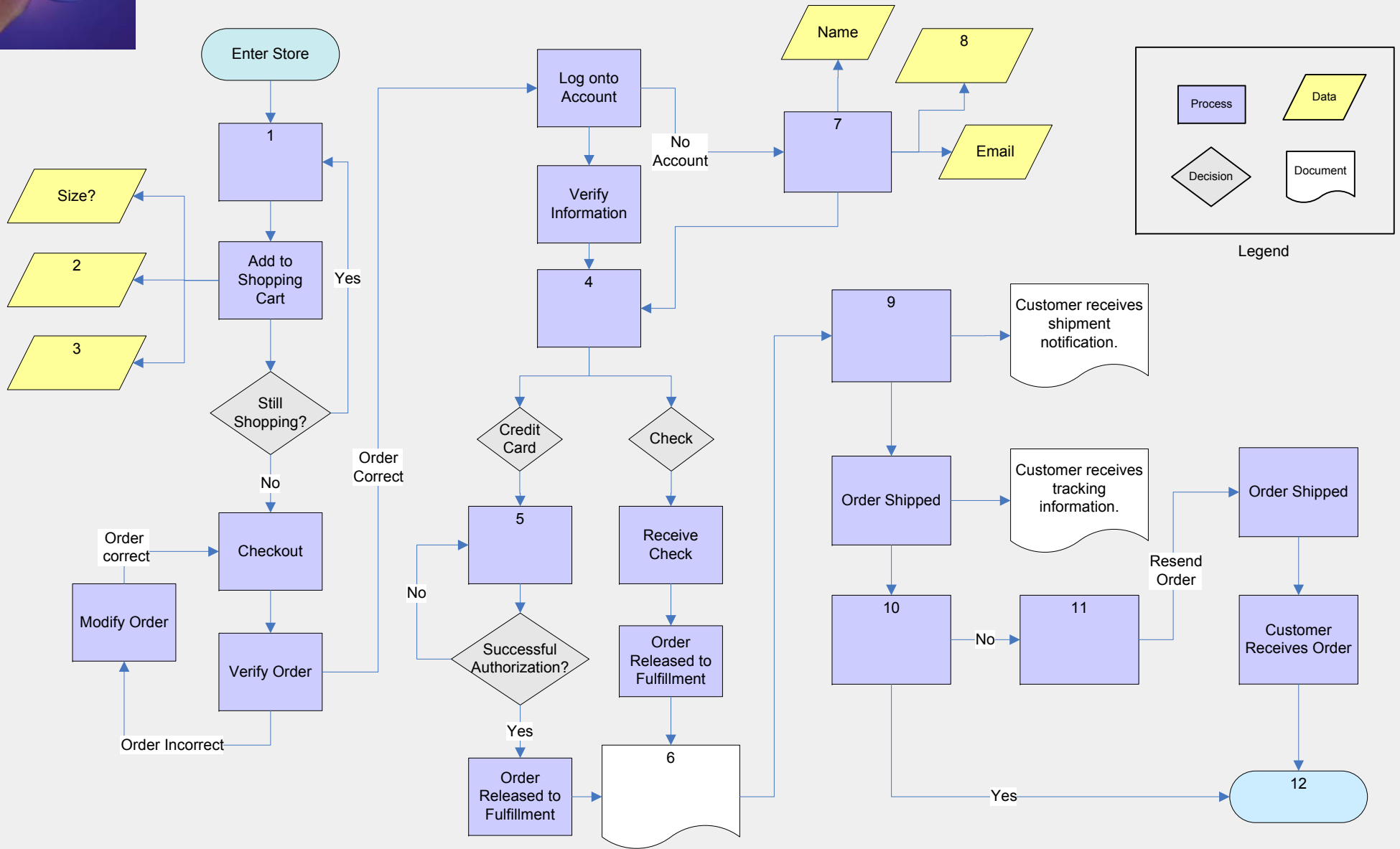




# Online Order Processing

Match the words at the bottom to the appropriate part of the Online Order Process



Legend

- Order Complete
- Select Payment Option
- Order packed and sent to shipping
- Address
- Set up New Account
- Order confirmation sent to customer via email.
- Color
- Customer Receives Order
- Enter Card Information
- Select Product
- Quantity
- Track Lost Package